



**segezha**  
group

**Segezha Creative**  
Plywood for finishing work

**13 colours –  
millions of  
possibilities**



# An abundance of colours and textures



**Segezha Creative** is portfolio of products manufactured from high-quality birch plywood which was developed especially for those who do not limit their imagination to standard combinations of colours and are inspired by creativity and the search for new and outside-the-box solutions.

The extensive range of colours and tints of this plywood can satisfy any discerning taste.

Three types of surface texture – smooth, wire and hexa – can be combined or used separately for additional creative possibilities.

## Colour matters



**Segezha Creative** products are used in applications where the aesthetic qualities of materials, simplicity of maintenance and performance are of prime importance.

They have been effectively used in interior decorations, furniture manufacturing, finishing of vehicles and outfitting of children's playgrounds and sporting grounds. In short, they are used everywhere where colour is key.



# An unlimited range of applications

Despite their similar technical and aesthetic properties, each of the Segezha Creative products is designed for its own range of applications.





A blue background with a repeating pattern of hexagons. Each hexagon contains a smaller, darker blue hexagon with a textured, almost woven appearance.

Hexa

A blue background with a repeating pattern of small, interconnected loops, resembling a wire mesh or a fine, woven fabric.

Wire

A solid, uniform blue background with no visible pattern or texture.

Smooth

Segezha  
Creative  
**Blue**  
**Melamine**



# Segezha Creative Blue Melamine

A plywood with blue melamine film, recommended for applications in furniture manufacturing, construction of children's playgrounds, and interior finishing and decoration of commercial premises, schools and preschools.



A yellow background with a repeating pattern of hexagons. Each hexagon contains a smaller, textured hexagon.

Hexa

A yellow background with a repeating pattern of small, interconnected loops, resembling a wire mesh.

Wire

A solid yellow background with a smooth, uniform texture.

Smooth

Segezha  
Creative  
Yellow  
Melamine



# Segezha Creative Yellow Melamine

A saturated, cheerful yellow colour perfectly suited for children's playgrounds, play rooms, manufacturing of children's furniture and even theatrical scenery.



A close-up photograph of a yellow material with a repeating hexagonal pattern. Each hexagon contains a small, raised, textured element.

Hexa

A close-up photograph of a yellow material with a fine, repeating grid or wire mesh pattern.

Wire

A solid, uniform yellow surface with a smooth, matte finish.

Smooth

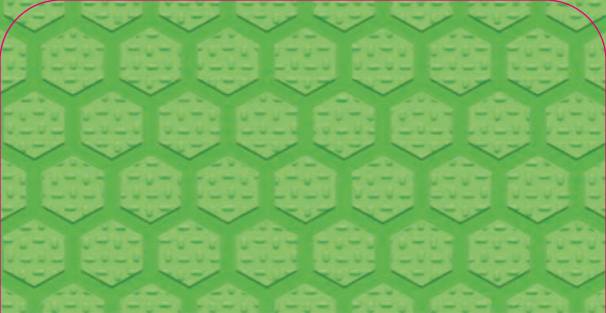
Segezha  
Creative  
Yellow  
Phenolic



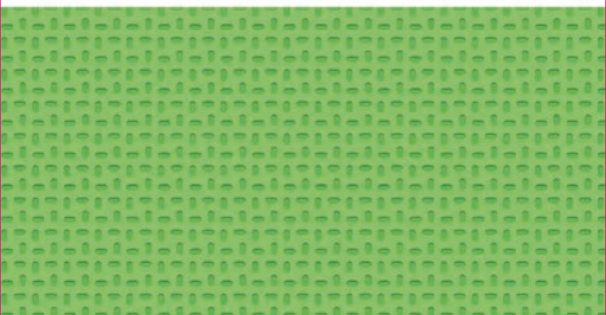
# Segezha Creative Yellow Phenolic

Yellow Phenolic is a snuff-yellow-coloured plywood that is much in demand in the construction of stock breeding facilities, formwork manufacturing, furniture manufacturing and in creating interiors.





Hexa



Wire



Smooth

Segezha  
Creative  
Green  
Melamine



# Segezha Creative Green Melamine

A green plywood with a long-wearing melamine coating that is perfectly suited for the interiors of residential and commercial premises, furniture manufacturing, and the decoration of play rooms, schools and preschools.



A dark green background with a repeating pattern of hexagons. Each hexagon contains a smaller, lighter green hexagon with a grid-like texture inside.

Hexa

A dark green background with a repeating pattern of small, interconnected squares, resembling a wire mesh or woven fabric.

Wire

A solid, uniform dark green rectangular block.

Smooth

Segezha  
Creative  
Green  
Phenolic



# Segezha Creative Green Phenolic

A plywood of a rich green colour that is used in children's playgrounds, furniture design, and the interior decor of offices and food service businesses.



A red background with a repeating pattern of hexagons. Each hexagon contains a smaller, textured hexagon.

Hexa

A red background with a repeating pattern of small, stylized wire mesh or grid squares.

Wire

Smooth

Segezha  
Creative  
Red  
Melamine



# Segezha Creative Red Melamine

A saturated red colour which is especially appropriate for creating vivid modern interiors, manufacturing furniture and decorating public spaces, trade outlets and gymnasiums.





Hexa



Wire



Smooth

**Segezha  
Creative  
White  
Melamine**



# Segezha Creative White Melamine

A plywood with a snow-white coating that is indispensable in implementing designer interior solutions, furniture manufacturing and decorating; it is also widely used in fitting-room structures. Its additional application is the construction of vehicles, where it is used for internal wall panelling, but can be also used as external panels on trailer.





Hexa



Wire



Smooth

Segezha  
Creative  
Black  
Phenolic



# Segezha Creative Black Phenolic

A plywood with a dark black coating which has been traditionally used in the production of horse trailers, cases for specialized equipment and musical instruments, and decorations. It is highly desirable in applications where a comfortable, social semi-darkness is sought after, i.e. in the interiors of bars and restaurants.



A close-up photograph of a dark grey melamine surface featuring a repeating hexagonal pattern. Each hexagon contains a smaller, textured hexagonal shape.

Hexa

A close-up photograph of a dark grey melamine surface with a fine, grid-like wire pattern.

Wire

A close-up photograph of a solid, smooth dark grey melamine surface.

Smooth

**Segezha**  
**Creative**  
**Grey**  
**Melamine**



# Segezha Creative Grey Melamine

A plywood of saturated grey colour that is appropriate for panelling floors and walls in small commercial vehicles, interior decorations or retail equipment.





Hexa



Wire



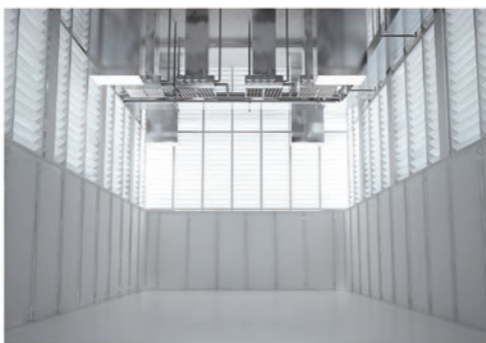
Smooth

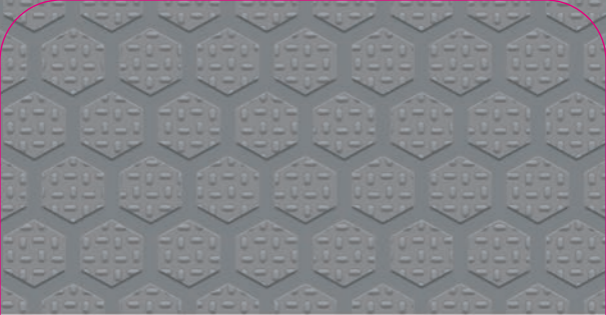
**Segezha**  
**Creative**  
Light Grey  
Melamine



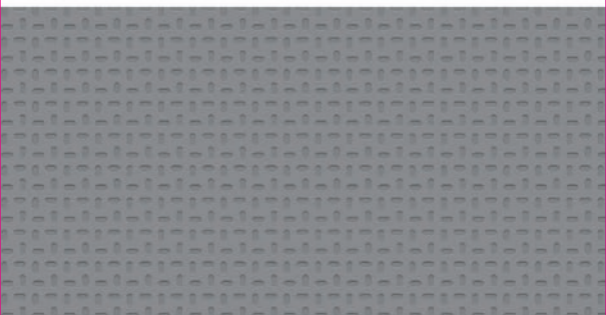
# Segezha Creative Light Grey Melamine

A plywood of a light grey colour; it is irreplaceable for panelling floors and walls in small commercial vehicles or in interior decorations of public and commercial premises.





Hexa



Wire



Smooth

**Segezha**  
**Creative**  
**Stone Grey**  
**Melamine**



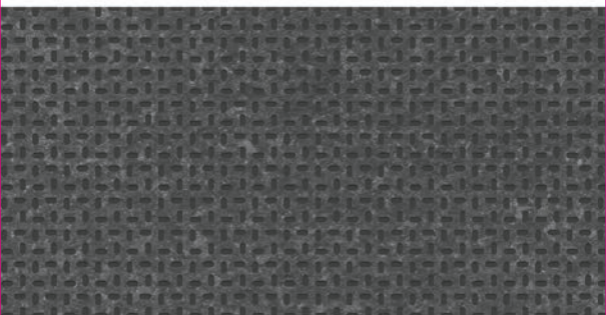
# Segezha Creative Stone Grey Melamine

A plywood of grey stone colour that is perfectly suited for the production of benches for boats, floors and walls for small commercial vehicles, and internal decorations of food service establishments, hospitals and sporting venues.

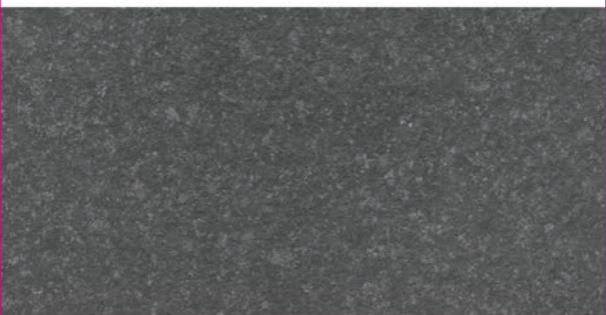




Hexa



Wire



Smooth

Segezha  
Creative  
Multigrey  
Melamine



# Segezha Creative Multigrey Melamine

A plywood that is very good for floors in small commercial vehicles, wall decoration in offices and storage rooms, and development of creative interior elements and commercial structures.



Smooth

Segezha  
Creative  
**Light  
Brown**



# Segezha Creative Light Brown

Designed for furniture manufacturing, wall finishing work, and the creation of interior elements, and is used in the construction of yachts and trailers.



# Combined advantages

A wide range of colours and tints to choose from



Three types of surfaces



Smooth



Wire



Hexa

Resistance to ultraviolet rays  
(for melamine films) ✓

Excellent decorative qualities ✓

Improved moisture resistance ✓

The products can be used  
indoors or outdoors ✓

**100% HIGH-QUALITY  
BIRCH PLYWOOD**

Individual approach. Cutting  
and CNC based on customized  
specifications and drawings

**Our products are FSC® certified**



# Specifications

## Dimensions

1220 x 2440; 1250 x 2500 mm – 4 x 8

2440 x 1220, 2500 x 1250 mm – 8 x 4

1500 x 3000; 1525 x 3050 mm – 5 x 10

1220/1250 x 3000/3050 mm – 4 x 10

1500/1525 x 2400/2440/2500 mm – 5 x 8

## Thickness

6 – 40 mm

## Texture

Smooth, wire and hexa

## Formaldehyde emission class

E1

## Glue category

Exterior, WBP



FPC confirmed  
according  
to EN 13986



[www.fsc.org](http://www.fsc.org)  
FSC-C084688



**CARB**

**Complies with the specifications**

**16.21.12-006-93222532-2019**





# segezha group



## team

professional excellence  
and commitment  
of the team



## quality

state-of-the-art  
equipment,  
systems of  
ultrasound  
and optical  
scanning



## manufacturing

two industrial sites

we planted  
**12000** km<sup>2</sup>  
of forest  
within  
just **5** years



## service

customized approach to each order;  
we offer cutting and CNC processing  
services based on the customer's  
specifications; worldwide delivery



## certification

over **95%** of our forest  
land has been certified  
according to the FSC®  
standard



## resources

we have our own sources  
of raw materials





**segezha**  
group

**OFFICE IN MOSCOW:**

18/9, Andropova pr.,  
RU-115432 Moscow, Russia  
Phone: +7 499 962 82 00

**VYATSKY PLYWOOD MILL LLC  
KIROVSKY PLYWOOD MILL LLC 1,**

Commune street, Kirov  
Kirov region, 610013, Russia

